

Fast. Smart. Clean.



NOVA Series



The ideal dry cleaning system for using alternative solvents



Pursuing the path of excellence



Since its conception year of 1976 **UNION** has always been recognized as a leader in the field of dry cleaning, one which all other dry-cleaning systems have had to confront.

UNION's leadership is evident in the planning and development stage of new products and processes and is even more tangible during the actual production of its high quality systems.

The company boasts expert managerial staff and an innovative industrial team with an eye for cutting edge technology able to design and manufacture the most up to date systems.

UNION's vast modern manufacturing and assembly centre houses CAD-CAM based design departments, a state of the art research and development centre, and the most modern production facilities, equipped with fully automatic machinery such as laser cutting and robot welding, assembly lines and quality control, as well as in-house training facilities at the disposal of the sales network at all times.

Over 90% of individual machine components are made in-house to assure the company is self-sufficient.

Each component is produced and certified within the company in order to ensure the highest quality level in every **UNION** product.

Today, **UNION** dry-cleaning machines can be found in over 120 countries, sold and serviced by more that 275 factory-authorized dealers worldwide.

At **UNION** we know what it takes to be first and are fully aware of our responsibilities...our commitment allows us to help your business be first at the finish line in dry cleaning quality and profits

HISTORY
QUALITY
TECHNOLOGY
RESEARCH
INNOVATION
SAFETY

UNION NOVA, simply ingenious!



UNION NOVA, simply ingenious!

NOVA is an innovative cleaning system incorporating one great idea : bringing together two independent cleaning systems in a single machine, the first for cleaning dark garments and the second for lighter colored or white garments.

- **NOVA offers an excellent compatibility with a wide range of textiles and accessories**
- **easy to use and requires little maintenance.**
- **Low energy consumption and big savings: only 3,9 kW required for a 15 kg machine, ZERO costs for water and ZERO costs for steam (WATER FREE air cooled version)**
- **Environmentally friendly**
- **Softer garments with brighter colors**
- **No static charge allowing better finishing and faster ironing.**

The NOVA system is easy to use and gives excellent cleaning results reducing running costs to a minimum.

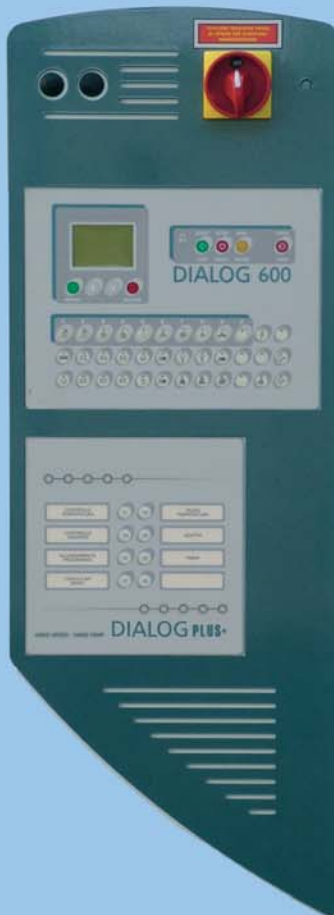
The NOVA system is WITHOUT DISTILLATION and allows EASY AND RAPID IRONING at lower costs.

The NOVA system is ECO-COMPATIBLE designed for use with new solvents with minimal impact on the environment

UNION NOVA, simplicity and saving together



Advanced technology for superior performance



The new **DIALOG** computer comes programmed for all your cleaning requirements whatever solvent you wish to choose. The programs can also easily be customized by the machine operator by following a few simple instructions.

By keying in simple code numbers the cleaning system can be set for working with hydrocarbon or silicon-based solvents without having to make any mechanical or structural modifications to the machine.

DIALOG's wide and well lit screen gives clear and understandable information about how the particular program is working.

The computer **DIALOG**, with its simple to use and easy to read menus, is constantly monitoring the most important features of each cycle, showing solvent temperature, program time countdown, drying air temperature of the air going in and out of the drum during drying, and other important information.

The **UNION DIALOG** system, exclusive to **UNION**, also allows you to save programs and parameters of every single cleaning cycle onto a **MEMORY CARD** together with information on maintenance to be carried out on the machine.

All data are memorized and ordered according to date and time and can be stored onto any PC for easy future reference, compiling statistics or certifications for your final client.

All **UNION NOVA** series machines have a large control panel for easy understanding of the various phases of operation.



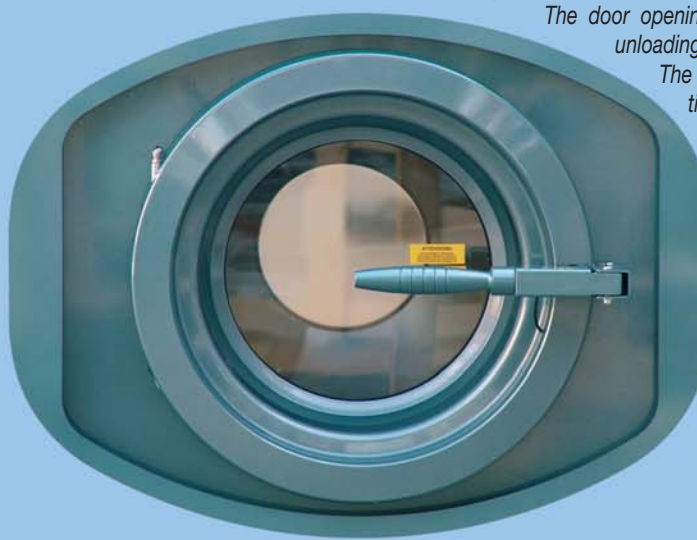
The wide aluminum cast loading door is fitted with a **DIALOG** computer controlled lock which does not allow the door to be opened before the cleaning cycle is over.

The door opening angle is designed to optimize loading and unloading of garments.

The unique basket design means air volume circulating in the basket is optimized making it easier to control garment temperatures thereby allowing faster drying and efficient cooling down.

Automatic rinsing of the rear basket plate is also possible in order to remove any excess fibers to ensure longer life and higher performance.

Door opening from left to right is also possible on request.



The **UNION MEMORY CARD** also means that your drycleaning machine's performance can be constantly improved. Software upgrades can be made via the card as well as allowing data to be copied to your personal computer or for programs to be copied easily and safely from one machine to another.



NEW UNION IDEAS WITH AN EXTRA PLUS

The integrated control system **DIALOG PLUS** represents **UNION's** latest feature for optimizing the use of drycleaning machinery

The **DIALOG** computer has its own **MAINTENANCE SCHEDULE** program which reminds the operator when to carry out essential maintenance work in order to obtain the best results and simplify the dry cleaning process. Today this revolutionary system is used on every **UNION NOVA** model.

The **DIALOG** system also allows you to use the various programs and modify them even partially without having to re-program every step each time, thus eliminating wasted time in repetitions. Programming the required temperatures as well as washing and spin speeds, which on the **UNION NOVA** are all controlled by the fully programmable electronic inverter.

In fact, with **DIALOG PLUS**, you can set and modify these values for each phase of each program. Once programmed the **DIALOG PLUS** will automatically recall the settings and carry out the cycle in exactly the same way guaranteeing unprecedented cleaning results.

With the **DIALOG PLUS** computer you can run a cleaning cycle at standard temperatures and then immediately after choose a "delicate program", with a lower solvent and/or drying temperature, or with a lighter mechanical movement, without having to alter the settings manually.

At the beginning of a cycle **DIALOG PLUS** will allow you to hold the program until the correct temperature has been reached. It also automatically checks the correct amount of soap or other additives to be used and with one simple command you have the chance to extend the time of the program you are using.

That's why what we call PLUS today, you will call indispensable tomorrow!

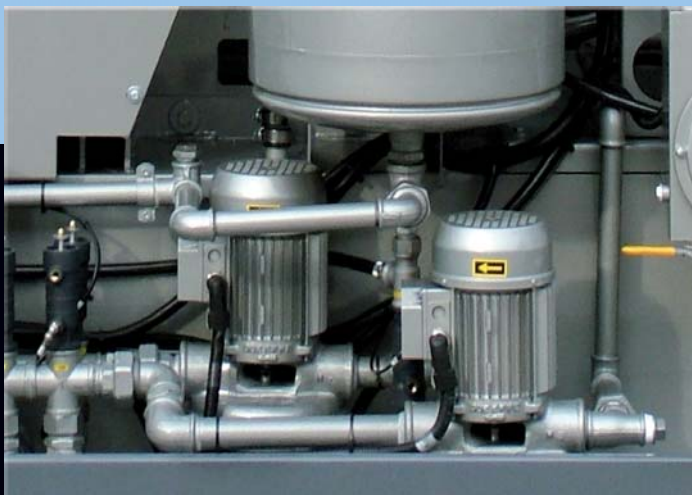


Nova, a synthesis of technology and simplicity



All **UNION NOVA** models feature a double circuit for filtering solvent. The first for general purpose and dark garments and the second for light colors and white garments. In this way, the cleaning quality of the white garments is guaranteed making it possible to do a cleaning cycle at any moment since the circuit for whites is completely independent from the dark circuit. The primary cleaning circuit for dark clothes is made up of a filter system using nylon material discs together with filter powders specifically for these solvents. The white and light colored circuit uses a long-life cartridge filter.

All **UNION NOVA** models feature a double cleaning circuit each one completely independent from the other, as well as a twin solvent tank and twin filter circuit. To guarantee total independence of the two cleaning circuits all **NOVA** machines have two independent solvent pumps, one for each cleaning circuit, avoiding even the slightest contamination of the solvent during the cleaning of dark or white and lighter colored garments. These features make **UNION NOVA** models a unique dry cleaning system with regard to simplicity of use and cleaning quality, ideal even for garments with F marking.



The new drying circuit equipped with a high capacity and high performance fan is able to ensure a good quality in drying.

For maximum protection for the refrigeration unit all **NOVA** models are fitted with a **DOUBLE AIR FILTER**, easily accessed and easily inspected through a practical opening.

The drying tunnel is also fitted with an extra inspection window in order to facilitate maintenance to the refrigeration condenser

UNION NOVA models are also available on request with a state of the art technology refrigeration unit able to guarantee savings on energy and an unequalled environment compatibility.

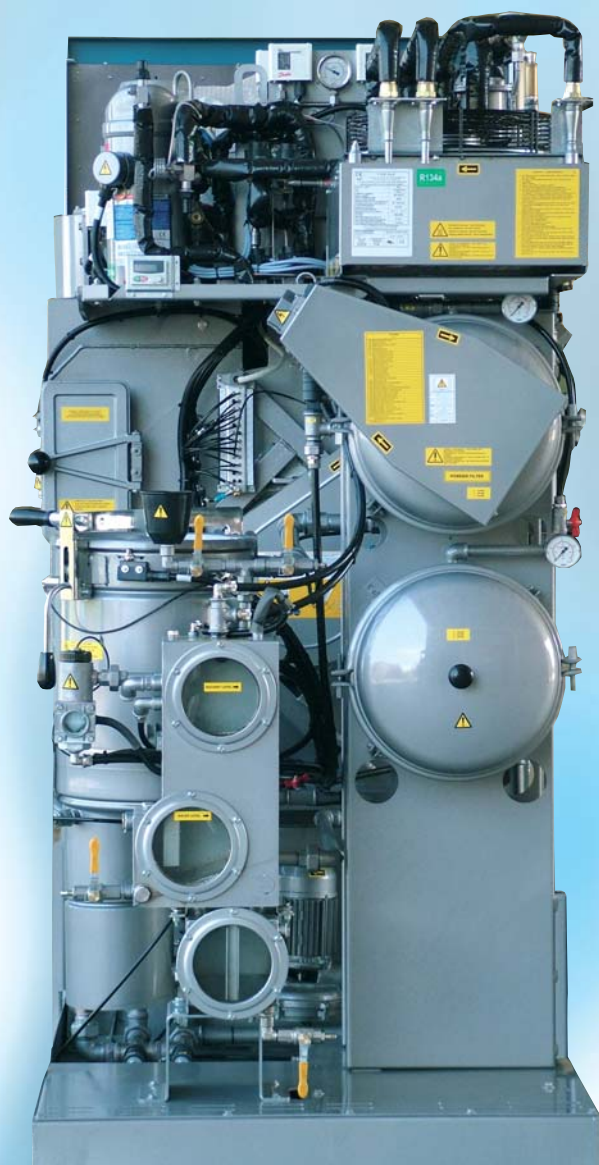
In the **WATER FREE** version **UNION NOVA** does not require one drop of water for system cooling since it is equipped with a small air condensation unit.

This system allows you to dry garments using only the refrigeration unit heat pump, without any steam and without electric elements, allowing greater reliability and guaranteeing a drastic reduction in energy consumption never experienced on any system before **UNION NOVA**.



The ideal dry cleaning system for using alternative solvents

UNION NOVA250, NOVA350, NOVA40, NOVA60, Space Savers Series Fast. Smart. Clean.



UNION NOVA is an innovative cleaning system which groups two independent cleaning systems in a single machine, the first for cleaning dark garments and the second for cleaning lighter colored or white garments.

The system has two completely separate circuits, two independent tanks, two solvent pumps and two dedicated filter circuits, all guaranteeing excellent cleaning results. For cleaning normal and dark garments **UNION NOVA** uses a filtering system with nylon discs and filter powders, while for light garments a cartridge filter system is used, still ensuring plenty of autonomy.

NOVA250 (25 Lbs), NOVA350 (35 Lbs), NOVA40 (40 Lbs), and NOVA60 (60 Lbs), are ideal for those shops and units with only a limited available space but who do not wish to compromise quality for their customers.

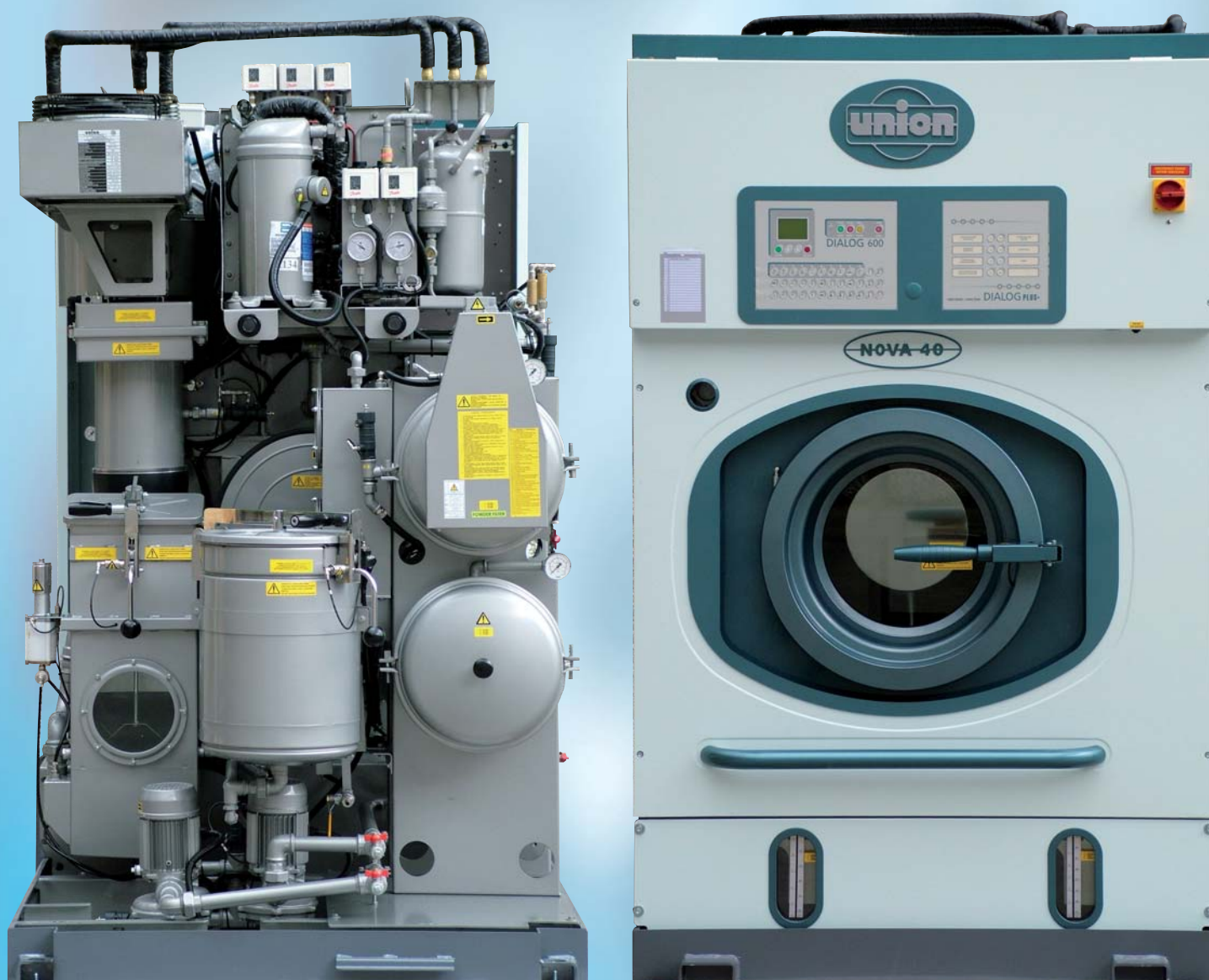
These are also ideal as auxiliary units to work side by side with existing machines, for cleaning garments and materials which are not compatible with water or chlorine based solvents.



The ideal dry cleaning system for using alternative solvents

UNION NOVA250, NOVA350, NOVA40, NOVA60, Space Savers Series

Fast. Smart. Clean.



These are some of the main features which make **UNION NOVA** the ideal machine for the professional cleaner:

- Minimum consumption and maximum saving; extremely low electrical consumption in the **WATER FREE** version with only 3.9 kW. Required for a 35 Lbs machine, **ZERO** water costs and **ZERO** steam costs.
- Highly compatible with the environment through use of low impact solvents and no waste drainage.
- The **UNION NOVA** system is easy to operate and offers excellent cleaning results reducing damage risk to materials to a minimum
- The **UNION NOVA** system is **WITHOUT A DISTILLATION UNIT** as solvent distillation is not required.
- The **UNION NOVA** system is **ECO-COMPATIBLE**, designed for new low impact solvents
- Basket rotation is controlled by a fully programmable **INVERTER** system allowing even different rotation speeds during the same cleaning and drying program.
- The inverter controlled basket rotation speed also allows a rocking movement, simulating hand washing, and without making a full turn.



The ideal dry cleaning system for using alternative solvents

UNION NOVA250E, NOVA350E Series

Fast. Smart. Clean.



UNION NOVA250E and NOVA350E models have the same features as all **UNION NOVA** models but are designed to take up less space in depth. Limited space is required at the back of the machine in order to carry out routine maintenance work with further advantages as far as necessary space is concerned. These are some of the features which allow excellent cleaning results:

- Cleaning with **UNION NOVA** makes garments softer and brings out brighter colors.
- Drastic reduction in static electricity charge meaning better finishing and faster ironing.
- A twin cleaning circuit, completely separate for light and dark colors.
- Two independent solvent pumps mean no contamination of the light colored garments.
- Extract speed can also be specially programmed for particularly delicate garments
- **UNION NOVA** has two separate filtration circuits for dark and light colors
- **UNION NOVA** is fitted with a double air filter guaranteeing maximum protection against particles of dust and fibers
- **UNION NOVA** is equipped with the fully programmable **DIALOG** computer featuring manual override controls
- **UNION NOVA** features an automatic additives system for the cleaning solvent

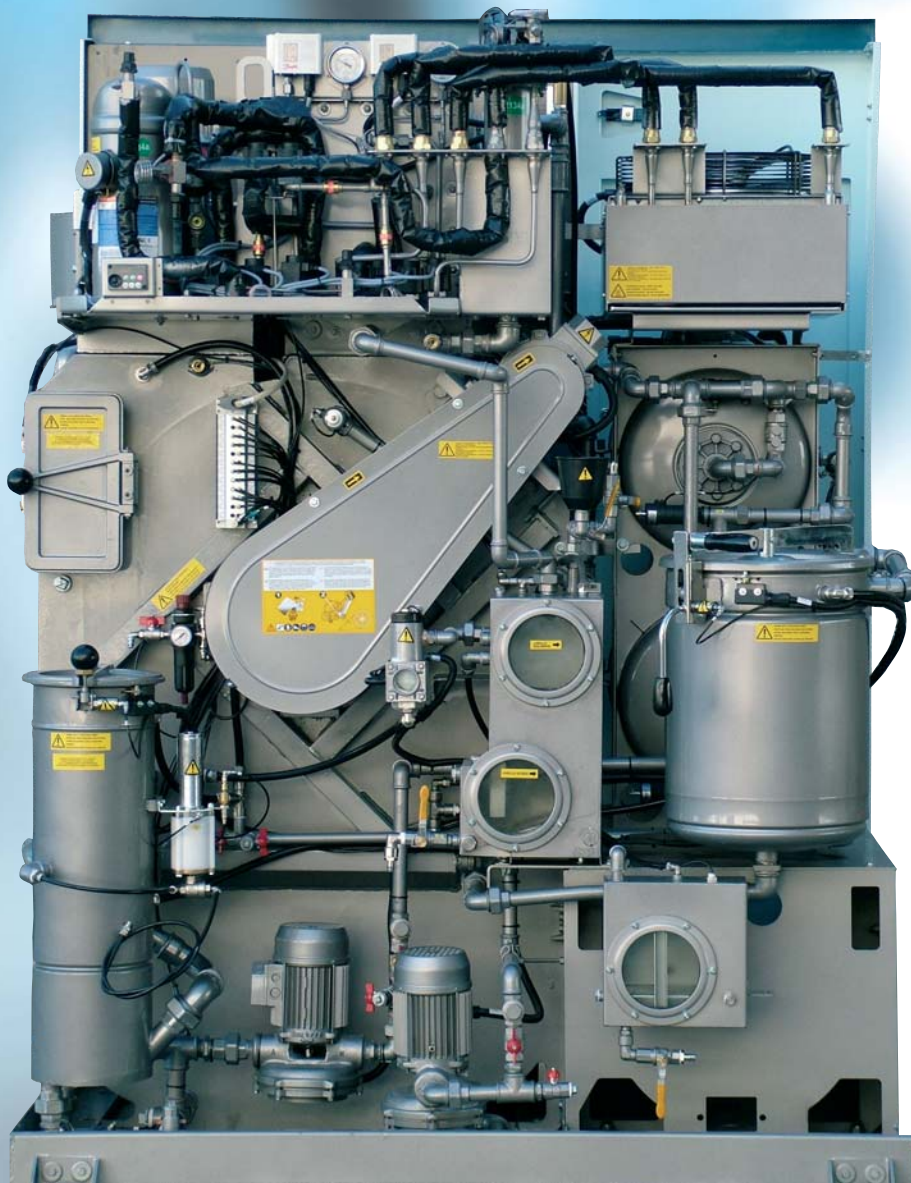
The **UNION NOVA** system together with the latest hydrocarbon aliphatic solvents, simplifies ironing and reduces ironing time, with great advantages in labor costs and satisfaction.



The ideal dry cleaning system for using alternative solvents

UNION NOVA250E, NOVA350E Series

Fast. Smart. Clean



The **UNION NOVA250E** and **NOVA350E** models are particularly compact and ergonomic allowing easy access to all machine components for rapid inspection and daily maintenance.

UNION NOVA's washing drum is computer designed in order to obtain maximum results in washing and drying.

Particular attention has been paid to the position of components in allowing easy access to the quick-fit pneumatic valves and various pipes, all fitted with rapid connections.

The structure of **UNION NOVA250E** and **NOVA350E** has been particularly designed to allow easy access to air filters and the button trap, all with a large surface.

UNION NOVA models are all equipped with a **DIALOG** computer in the integrated **DIALOG PLUS** version to guarantee maximum versatility in use and programming, also making it possible to set the required basket rotation speed and drying temperature, variable for each cleaning program or drying cycle.

All machines are built according to their country of destination with ETL certification for the USA and Canada and CE for other countries.



The ideal dry cleaning system for using alternative solvents

UNION NOVA40E, NOVA40S, NOVA60E, NOVA60S Series Fast. Smart. Clean.



These models can be supplied with two or three independent solvent tanks, each one separate from the other, with sloping base and solvent level inspection windows.

These models are built with the same care and with all the many innovations which distinguish the **UNION NOVA** series to guarantee exceptional cleaning quality, optimum performance, low consumption and respect for the environment.

UNION NOVA40E (40 Lbs), NOVA40S (40 Lbs), NOVA60E (60 Lbs) and NOVA60S (60 Lbs) are also ideal for large volumes of cleaning work and can guarantee excellent cleaning results. As on all **UNION NOVA** series models basket rotation is controlled electronically by a fully programmable **INVERTER**.

In all **UNION NOVA** models control circuits are all fed by 24 Volts.

- **UNION NOVA** is a multi-solvent system and can work both with a hydrocarbon solvent or liquid silicon GreenEarth™.
- The **WATER FREE** version does not require cooling water and does not discharge any cooling water to be treated. Furthermore, it does not require any steam or boiler.
- **UNION NOVA** has a wide opening loading door in order to ease garment loading and unloading
- **UNION NOVA** is fitted with a secondary contact water separator.
- **UNION NOVA** is fitted with an automatic optimal drying time system Dry Control as well as automatic dosing units for cleaning additives.



The ideal dry cleaning system for using alternative solvents

Innovation and technology for unequalled results Fast. Smart. Clean.



Alternative solvents such as hydrocarbon or liquid silicon are in reality not new but merely an evolution of solvents already known about in the past and used for a long time even before the end of the last century.

These solvents are now widely used in many countries such as the USA, Japan and Australia and many others. They are practically odorless, have excellent cleaning and soil removal qualities, are excellent for cleaning delicate garments, colored and synthetic materials which cannot be treated with perc or water, and allow technological fibers and delicate garments to be treated with excellent results.

They are compatible with general purpose materials and plastics and with printed colors.

By their very nature they maintain fibers better and make them longer lasting.

Used in the latest generation machines such as the **UNION NOVA** series, alternative solvents offer excellent results and with practically zero environmental impact guaranteeing excellent cleaning without any risk to the garments to be treated.

UNION NOVA series models are designed to offer maximum performance even in areas where space available is precious. In fact these machines take up very little space.

Noise levels are also particularly low, and well below maximum permitted levels.

The construction technology of these machines ensures excellent stability even during extraction, guaranteeing almost no vibrations to the floor underneath.

Particular attention has been paid to reducing running costs especially cooling water and electricity, costs which are becoming more and more expensive. Applying the latest most advanced technology developed by **UNION** the **UNION NOVA** series machines in function require a **MINIMUM** electrical consumption with **ZERO** water consumption (**WATER FREE VERSION**). That translates into notable savings on running costs multiplied by the savings from shorter ironing times for garments cleaned in hydrocarbon solvents or GreenEarth™ liquid silicon.

Whichever model or version you choose from the **UNION NOVA** series, it will be the ideal version for you. **UNION NOVA**: simplicity and savings all in one.

The ideal dry cleaning system for using alternative solvents

Technical Specifications

NOVA SERIES		250	250E	350	350E	40	40E	60	60E	90
LOADING CAPACITY	Lbs	25	25	35	35	40	40	60	60	90
DRUM										
Diameter	inches	27.6	27.6	31.5	31.5	35.4	35.4	39.3	39.3	47.3
Depth	inches	19.7	19.7	22	22	21	21	25.1	25.1	28
Wash speed	rpm	20-55	20-55	20÷55	20÷55	20-55	20-55	20-55	20-55	20-50
Extract speed	rpm	300-520	300-520	300-520	300-520	300-520	300-520	300-520	300-520	300-450
Door opening	inches	14	14	20	20	20	20	20	20	23.6
TANKS										
Useful volume tank 1	gal	20	20	28	28	39	29	50	42.3	72
Useful volume tank 2	gal	20	20	28	28	28	29	32	42.3	72
NYLON FILTER										
Volume nylon filter housing	gal	9.2	9.2	14.5	14.5	14.5	14.5	20	20	20
Surface	ft²	22.6	22.6	42	42	42	42	59	59	59
Discs	nr	14	14	26	26	26	26	39	39	39
CARTRIDGE FILTER										
Volume	gal	9.2	9.2	14.5	14.5	14.5	14.5	20	20	20
Housing	nr	1	1	1	1	1	1	1	1	1
Cartridges	nr	1	1	2	2	2	2	3	3	3
ELECTRIC POWER										
Working power	Kw	4.9	4.9	6	6	8.7	8.7	9.3	9.3	12.5
Washing / extract motor	Hp	0.7-3*	0.7-3*	0.8-4*	0.8-4*	1.7*	1.7*	2.7*	2.7*	2.7*
Solvent pump	Hp	0.75	0.75	0.75	0.75	1	1	1	1	1.5
Fan	Hp	1.5	1.5	2	2	3	3	3	3	5.5
Fridge compressor	Hp	2.75	2.75	3.25	3.25	5	5	5	5	6.5
Nylon filter motor drive	Hp	0.75	0.75	0.75	0.75	0.75	0.75	0.75	0.75	0.75
MACHINES WEIGHTS										
Empty machine	Lbs	1830	2072	2359	2469	3219	3417	3794	3924	4519
Machine with solvent	Lbs	2202	2447	2901	3012	3838	3977	4575	5062	5723
Static charge to floor with solvent	Lbs/ft²	134	123	132	133	132	119	144	126	134
Dynamic charge (+10%)	Lbs/ft²	195	175	207	206	208	186	247	209	256
MACHINES DIMENSIONS										
Width	inches	33.9+4.8	57.1+4.8	38.2+4.8	61.4+4.8	49.2+4	78.4+4	51.2+4	84.3+4	70.9+4
Depth	inches	76.8	56.7	86.6	59.4	88.2	63.2	89.4	70.9	92.1
Height	inches	79.3	79.3	83.7	83.7	80.3	80.3	84.3	84.3	93.6

* POWER CHANGES ACCORDINGLY TO THE USE OF THE MACHINE

Note: Acoustic emission level of the machines is lower than 70 dB (A)

Specifications subject to change without notice



UNION DRYCLEANING PRODUCTS USA
 10 Southwoods Parkway, Suite 100,
 Hapeville, GA 30354
 Tel: 1.800.433.9401 - Fax: 404.361.2454
 E-mail: info@uniondc.com
 Web page: www.uniondc.com